



Electric actuators, ON OFF type, to be mounted on the fluid shutoff devices (radiator valves, manifolds, for heating / cooling systems).

It is not possible to replace the power supply cable of this device, if the cable damaged, the control device should be discarded.

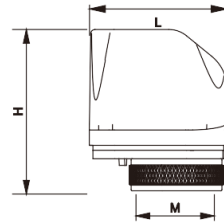
#### Technical Data

	FCANC2X230	FCANC2X24
Stroke	4mm	4mm
Actuation Force	120N	120N
Voltage	230V AC	24V AC
Power Consumption	2.5W	2.5W
Version	NC(Normally Closed)	NC(Normally Closed)
Running Time	180s-300s	180s-300s
Degree of protection	IP54	IP54
Housing Materials	PC+PA6	PC+PA6
Connection Cable	2x0.5mm Length 750mm	2x0.5mm Length 750mm
Ambient Temperature Range	0°C to 60°C	0°C to 60°C
Storage Temperature Range	-25°C to 60°C	-25°C to 60°C

#### Order Codes

FCANC2X230	Electrothermal Actuator with Power Supply: 230V AC
FCANC2X24	Electrothermal Actuator with Power Supply: 24V AC

#### Technical Specifications



H (mm)  
61  
L (mm)  
49  
Connection  
M30x1.5  
Weight(g)  
149

#### Operations

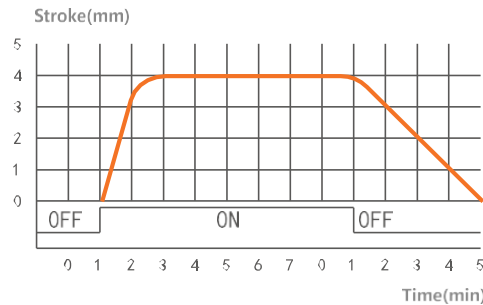
Normally closed version FCANC2X230 and FCANC2X24

When mounting the actuator on the valve body, the valve plug shuts off the flow of fluid.

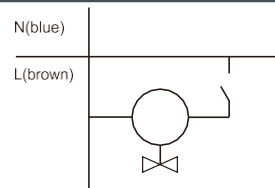
When voltage is applied a linear movement of thermostatic element is caused the valve plug opens which then allows the fluid to flow.

When the voltage is removed, the valve plug is closed again.

#### Function Diagram



#### Wiring Diagram

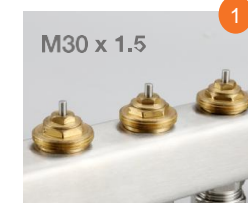


[www.havkon.com](http://www.havkon.com)

#### Assembly



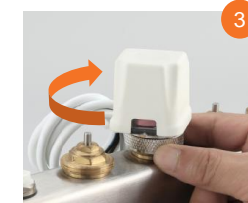
The electrothermal actuator can be installed in any mounting position.



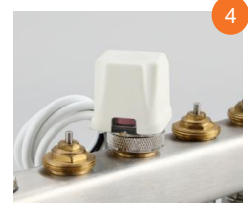
Make sure that the valve mounting thread complies with the M30x1.5 standard before installing the actuator.



Press the actuator to the valve threads.



Install the nut on the valve in clockwise direction and tighten it.



Installation is completed.

#### Warnings



**Before starting the installation of the device, carefully read the user manual and the warnings below.**

The user is responsible for any damage, loss, or personal injury resulting from failure to comply with the warnings in this manual. Do not modify or attempt to repair the device. Any intervention on the device may cause malfunction, damage to the device or the system.

In such cases, the device will be excluded from the warranty coverage.

Never open the actuator body casing even of failure, as this could cause injury.